



## PLC V 2.0 - Phonetracker Location Center Version 2.0

The easy to use GPS tracking software application for Windows PC administrates your mobile objects, shows their location and supports a lot of GPS tracking devices by SMS and GPRS.

### Advantages:

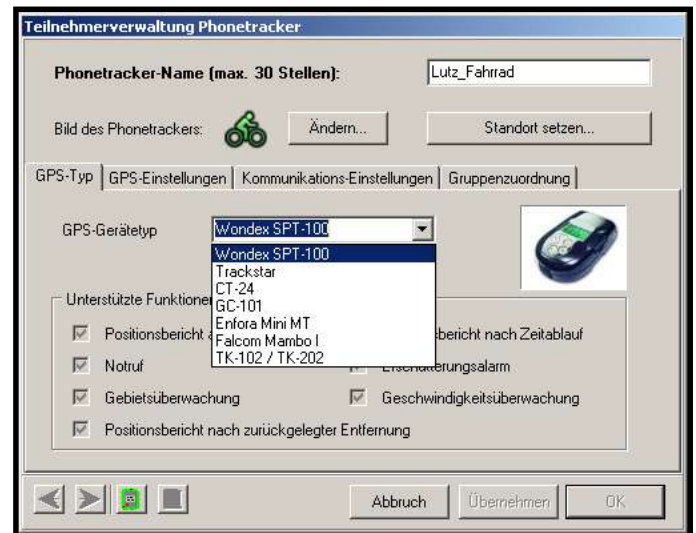
- No contract obligations nor monthly service charge
- Sensitive information are under your control on your local computer not on foreign servers!
- Easy to handle
- Low initial costs

For bigger fleets:

- Customer owned server solution available
- Software customisation for OEMs

### Features:

- Supports SMS and GPRS
- Fast response time even with slow internet connection speed
- Supports a lot of different GPS tracking devices
- Easy handling
- Manual position request with one click
- Automatical position request by software application
- Remote configuration of all available tracking settings like Geo-fence, alert conditions, automatical position reports etc. (depends on tracking device)
- Additional information like speed, direction and so on on the map
- Different map views, search function for locations, streets etc.
- Complete history of all incoming and outgoing messages (positions, alerts, configuration settings etc.)
- History storable without time limit
- Convenient search and export functions to use the history
- Show tracks and additional information on the map
- Track simulation with Google Earth™ export function
- Graphic chart of driving time and off-time
- Objects can be defined (offices, customers etc).
- Groups can be defined



### Product variants:

- PLC V2.0 Lite (1 device, only PTX200)
- PLC V2.0 Privat (1 device)
- PLC V2.0 Commercial (2 devices)
- PLC V2.0 Commercial (5 devices)
- PLC V2.0 Commercial (20 devices)

### Accessories:

GSM-Modem for SMS communications

### Minimum system requirements:

- PC Pentium IV, 1,6GHz
- 512 MB RAM
- 50 MB free hard drive space
- USB 2.0
- Windows XP, Vista, 7
- Internet access

